

E3 ENGINE

AUTOMATED SECURITY CONTROLS MEASUREMENT AND RISK REMEDIATION

THEORETICAL TO ACTUAL RISK MEASUREMENT

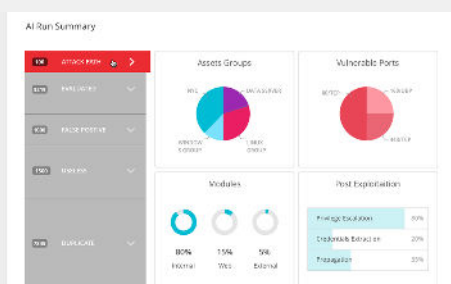
The NopSec E3 machine driven model evaluates and explores the effectiveness of your mitigating controls within your environment, giving you an added layer of security control validation and risk remediation. E3 is capable of escalating exploit-obtained privileges across the network to move laterally and eventually to an entire domain compromise. Go beyond theoretical to actual risk measurement with E3 Engine.



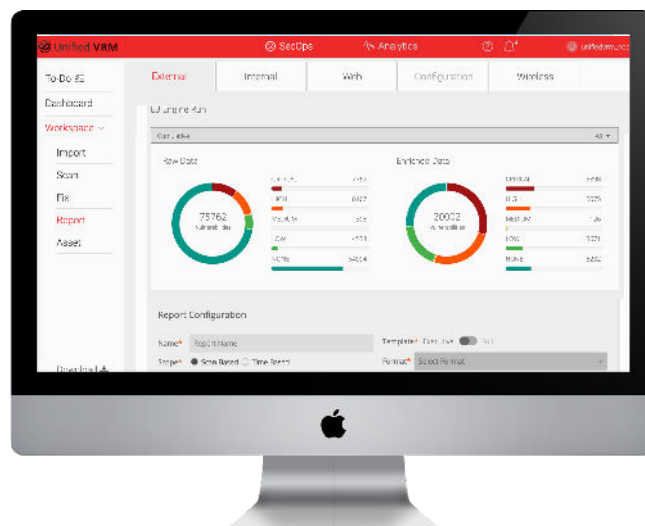
ActiveCheck

WORK ON WHAT MATTERS

By using 30+ unique intel feeds that include threat databases, social media and dark web threat intelligence, your unique business context and more, we enable you to work on what matters most with analytics-based precision risk scoring, providing the most accurate picture of your risks and priorities. Maximize your resources and your impact with the E3 Engine.



Precision Risk Scoring



E3 Engine: Evaluate, Explore, and Enrich

The E3 Engine is the world's first automated security controls measurement and risk remediation solution. A giant leap in intelligence cybersecurity automation technology.

By codifying decades of penetration testing knowledge and machine learning automation, NopSec created the most advanced cybersecurity analysis technology featuring:

- 30+ Unique Threat Data Feeds
- Data Cleansing: De-Duplicates and Removes False Positives and Non-Actionable Data
- Machine Learning
- Active and Passive Exploit Checking
- Social Media and Dark Web Threat Intelligence

The E3 engine evaluates the threat data associated with your environment, actively explores and assesses the effectiveness of your mitigating controls and enriches the vulnerability data with contextual elements that enable accurate domain specific prioritization.

Some of our happy customers

